

주최·주관 대한심장혈관흉부외과학회

2024 대한심장혈관흉부외과학회 제56차 추계학술대회

2024. 10. 31 (Thu) - 11. 01 (Fri) 여수 엑스포 컨벤션센터

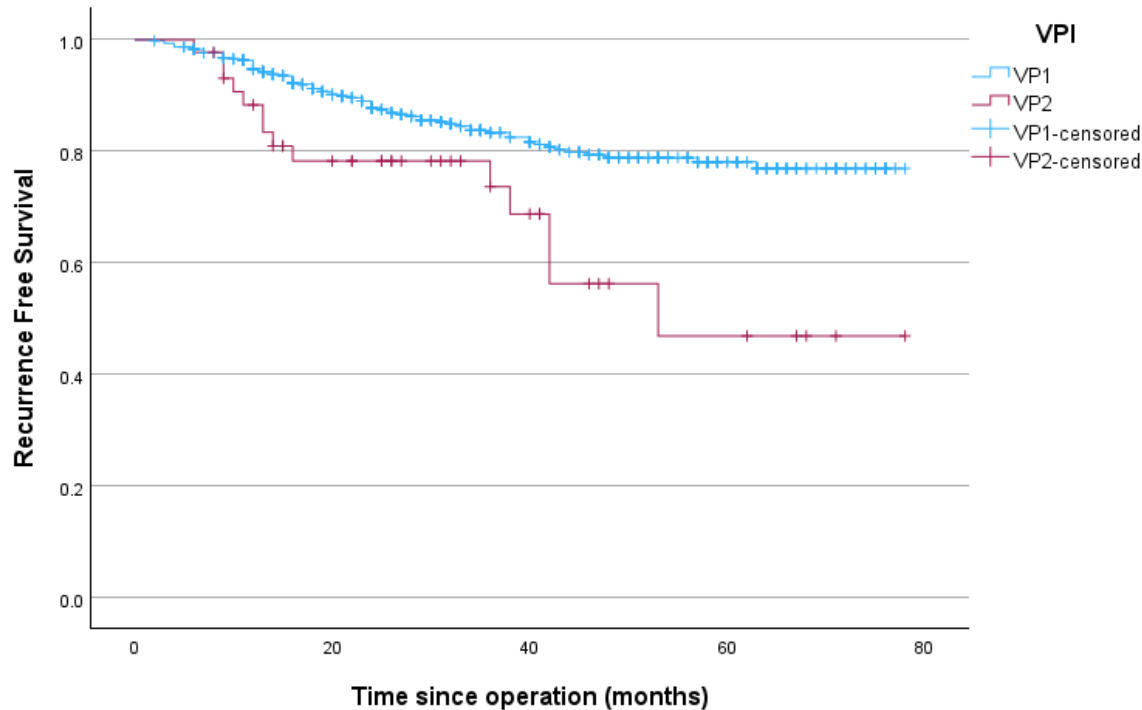


Differential impact of sublobar resection on visceral pleural invasion classification

- Visceral pleural invasion (VPI) is a well-known unfavorable prognostic factor in lung cancer
- VPI is not always considered when deciding on sublobar resection at the time of surgery for small tumors.
- Aim: To evaluate the impact of sublobar resection on small sized NSCLC according to visceral pleural invasion classification

- A total of **4505 surgically resected NSCLC patients** at Seoul National University Hospital between July 2017-March 2023 were retrospectively analyzed
- Inclusion criteria: ***tumor size $\leq 3\text{cm}$ and VPI (PL1 and PL2)***
- Exclusion criteria: *neoadjuvant chemoradiation, metastatic cancer, small cell lung cancer*
- **Relapse free survival (RFS)** was evaluated with Kaplan-Meier curve analysis.

- A total of **509 patients** (**PL1 = 465 patients** and **PL2 = 44 patients**) were included with a mean follow-up duration of 38.6 ± 20.4 months
- A significant difference was observed between PL1 and PL2 group in RFS (5y-RFS; PL1 vs PL2 = 83.9% vs. 68.2% **p=0.004**).



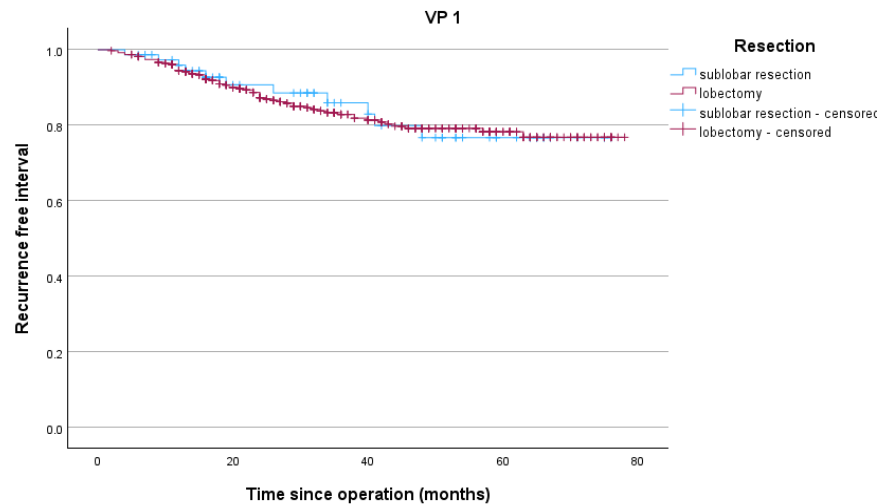
Freedom from recurrence

VP1 (n=467) 66.14 (63.73-68.56)

VP2 (n=44) 52.76 (42.67-62.85)

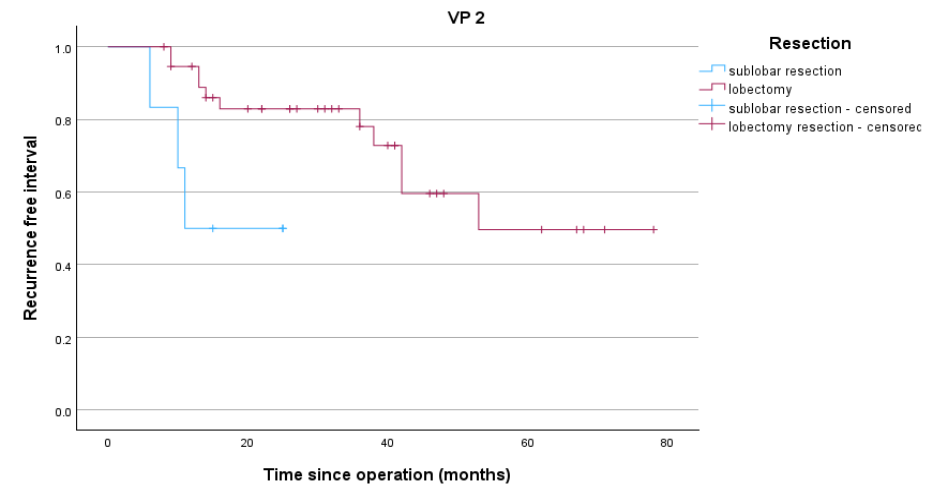
Log rank test P=0.004

- **PL1 group**, showed no difference in RFS between sublobar and lobar resection (5y-RFS; sublobar vs lobar = 85.3% vs. 83.6% $p=0.931$)
- **PL2 group** showed significant difference between sublobar and lobar resection (5y-RFS; sublobar vs lobar = 50% vs. 71.1% $p=0.022$)



$P=0.881$

Sublobar resection (n=76)	64.911 (59.011-70.811)
Lobectomy (n=391)	66.050 (63.415-68.684)



$P=0.022$

Sublobar resection (n=6)	17.000 (10.483-23.517)
Lobectomy (n=38)	55.424 (45.129-65.719)



- Sublobar resection had a differential impact on prognosis according to VPI classification.
- Sublobar resection should be cautiously utilized in NSCLC with $\leq 3\text{cm}$ and PL2