

주최·주관 대한심장혈관흉부외과학회

2024 대한심장혈관흉부외과학회 제56차 추계학술대회

2024. 10. 31 (Thu) - 11. 01 (Fri) 여수 엑스포 컨벤션센터



First Oncologic Specialty Linear Stapler: for Accurate Pathologic Examination of Surgical Margins

Era of Sub-lobar resection for peripheral early-stage Non-Small Cell Lung Cancer

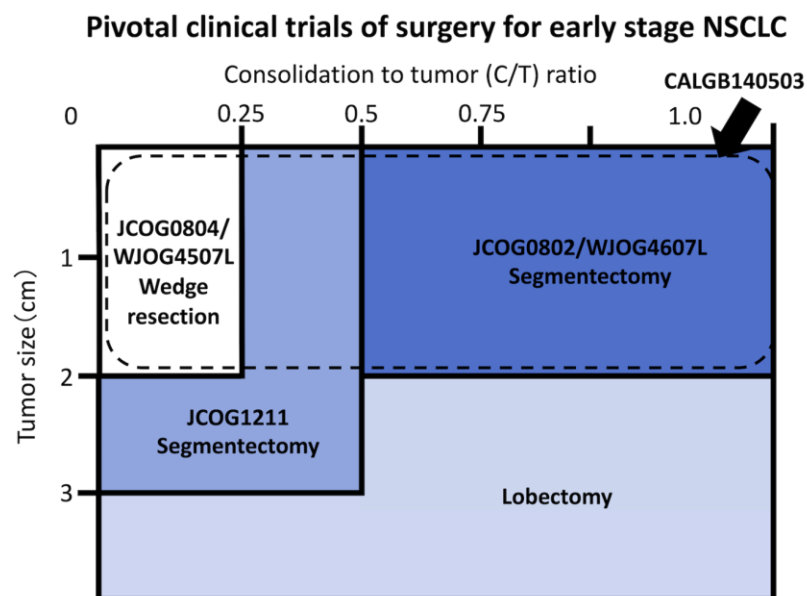
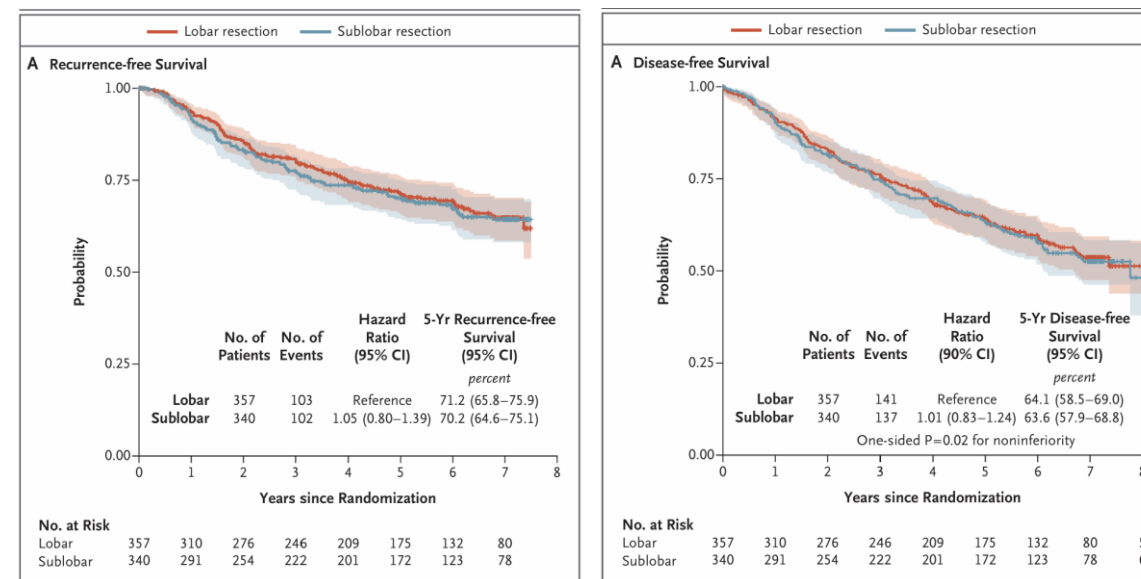


FIGURE 1
Schema of pivotal clinical trials conducted by the Japan Clinical Oncology Group (JCOG), West Japan Oncology Group (WJOG), and Cancer and Leukemia Group B (CALGB) Study.

Kamigaichi A, Hamada A and Tsutani Y (2023) Segmentectomy for patients with early-stage pure-solid non-small cell lung cancer. *Front. Oncol.* 13:1287088.

Lobar or Sublobar Resection for Peripheral Stage IA Non-Small-Cell Lung Cancer

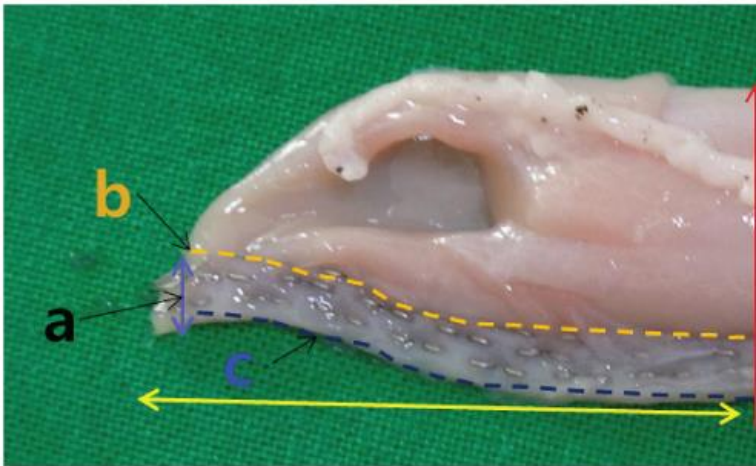


Altorki, Nasser, et al. "Lobar or sublobar resection for peripheral stage IA non-small-cell lung cancer." *New England Journal of Medicine* 388.6 (2023): 489-498.

Unmet need in conventional stapler for lung cancer surgery

impossible of resection margin tissue analysis

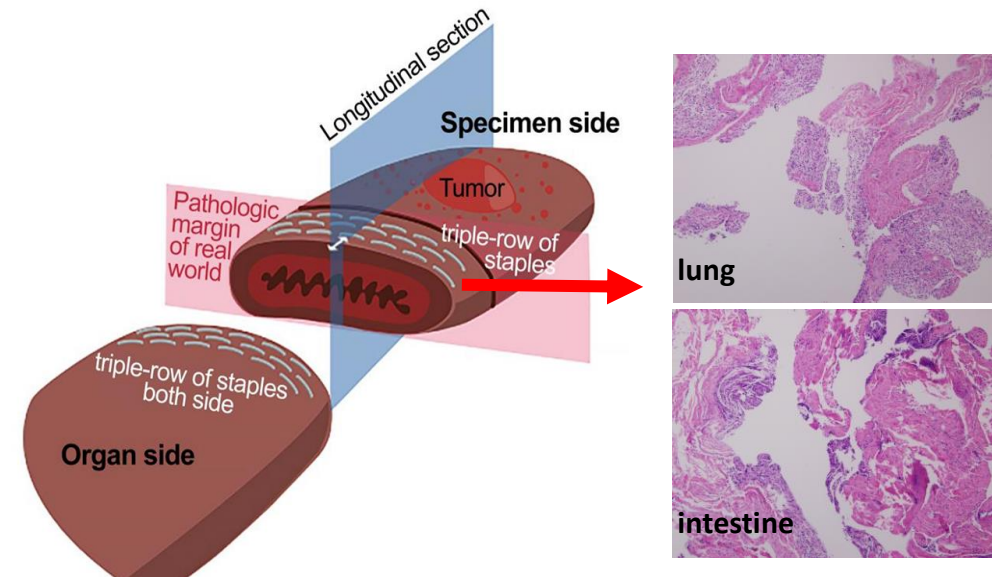
Conventional stapler have caused a **big problem** in pathologic examination of **surgical resection margin**.



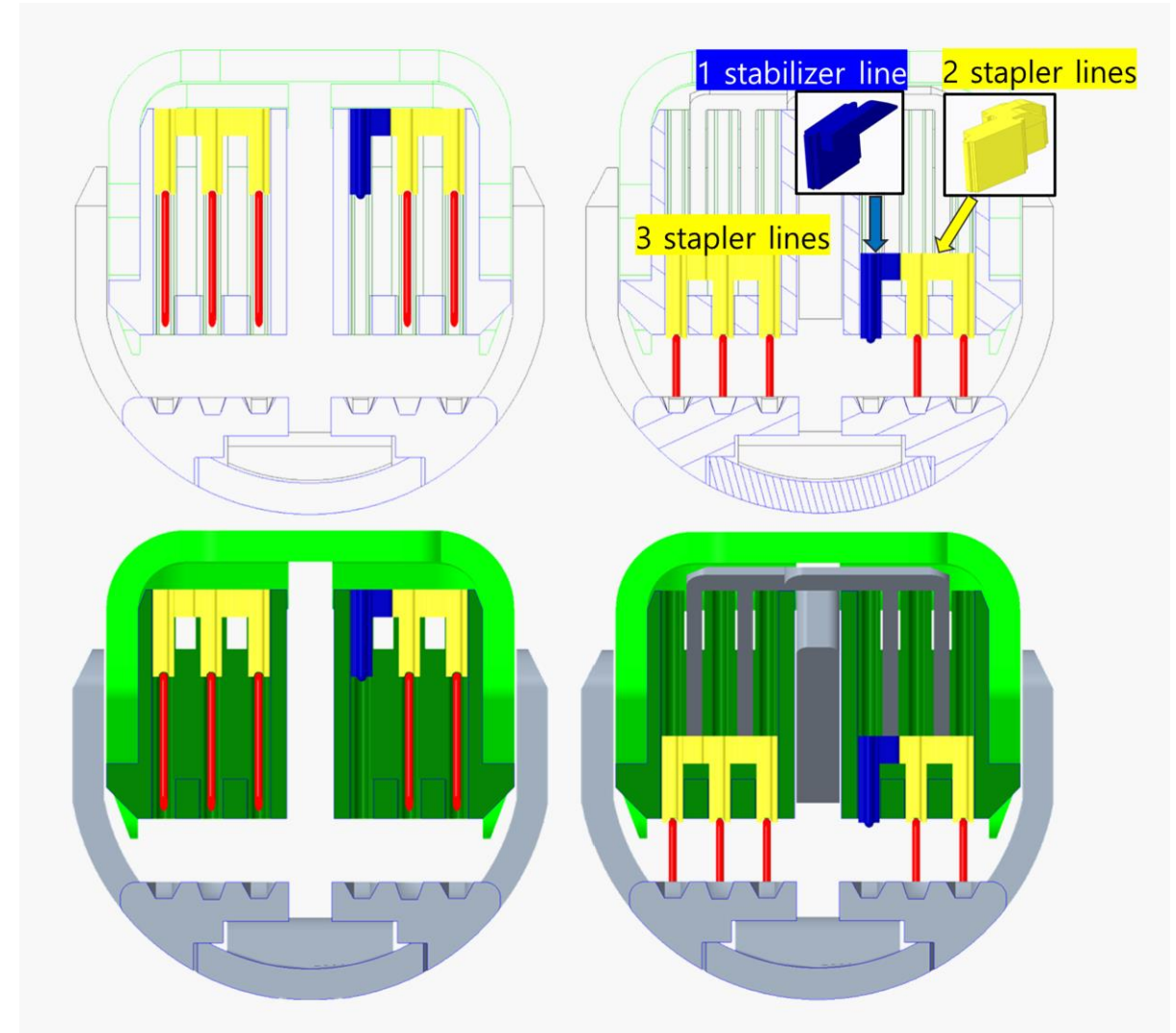
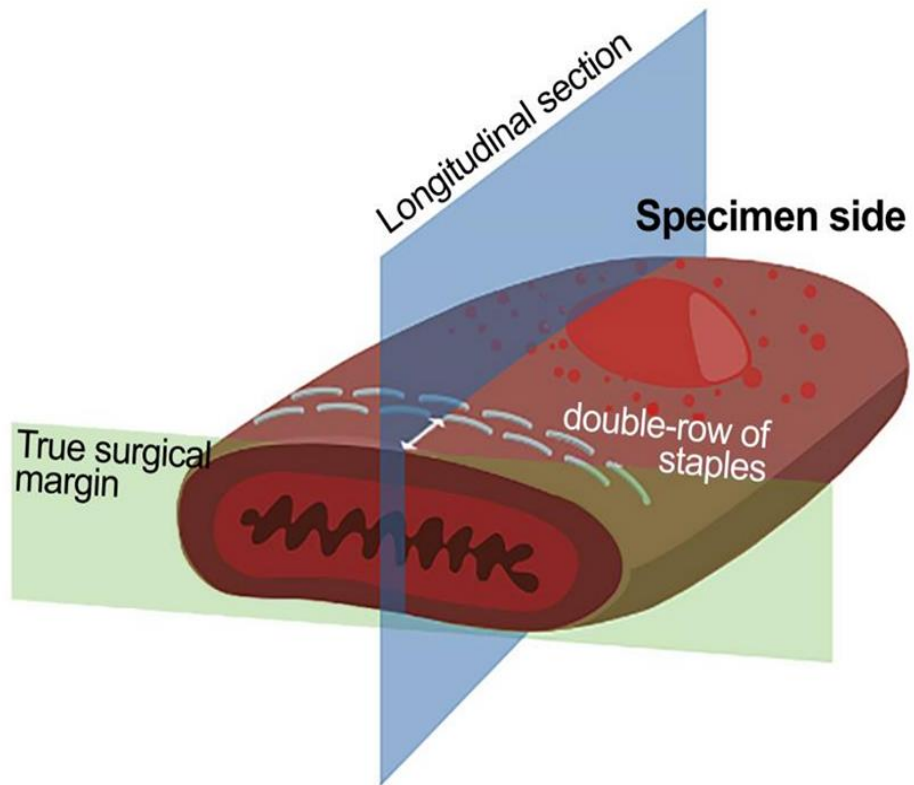
b: pathologic margin of real world

c: true surgical margin

Pathologic margin is not true surgical margin

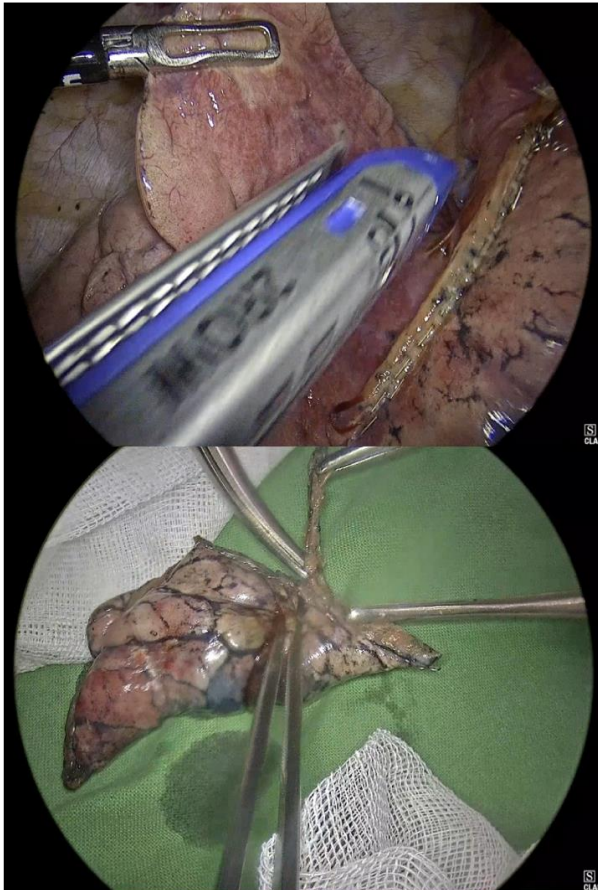


**Squeezing artifact made by fasteners of
Stapler at resection margin**

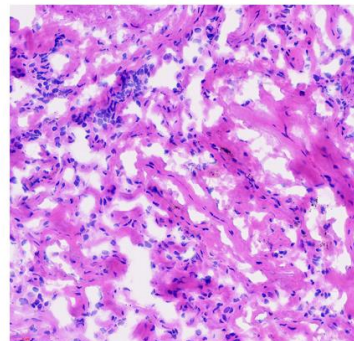


First Oncologic Specialty Linear Stapler

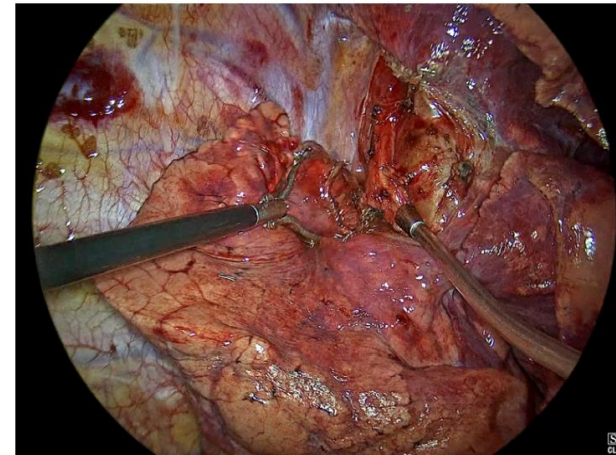
RLL wedge resection



Frozen section of
resection margin

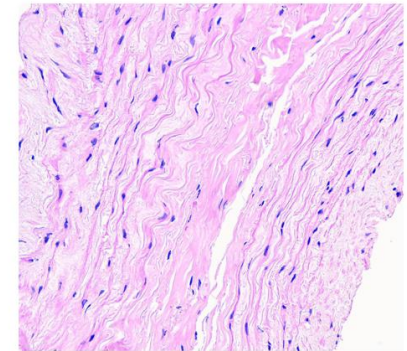


RLL S6 segmentectomy

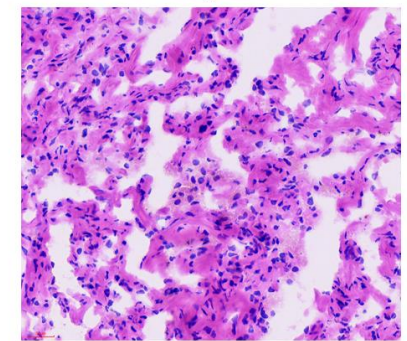


Frozen section of
resection margin

Frozen section of
bronchial resection margin



Frozen section of
resection margin



- This NALS offers a groundbreaking solution for improving the accuracy of pathologic margin evaluations in surgical procedures.
- By addressing a critical need in oncology surgeries, this innovation has the potential to enhance patient recovery, reduce recurrence rates, and providing better quality of life after oncologic surgery.