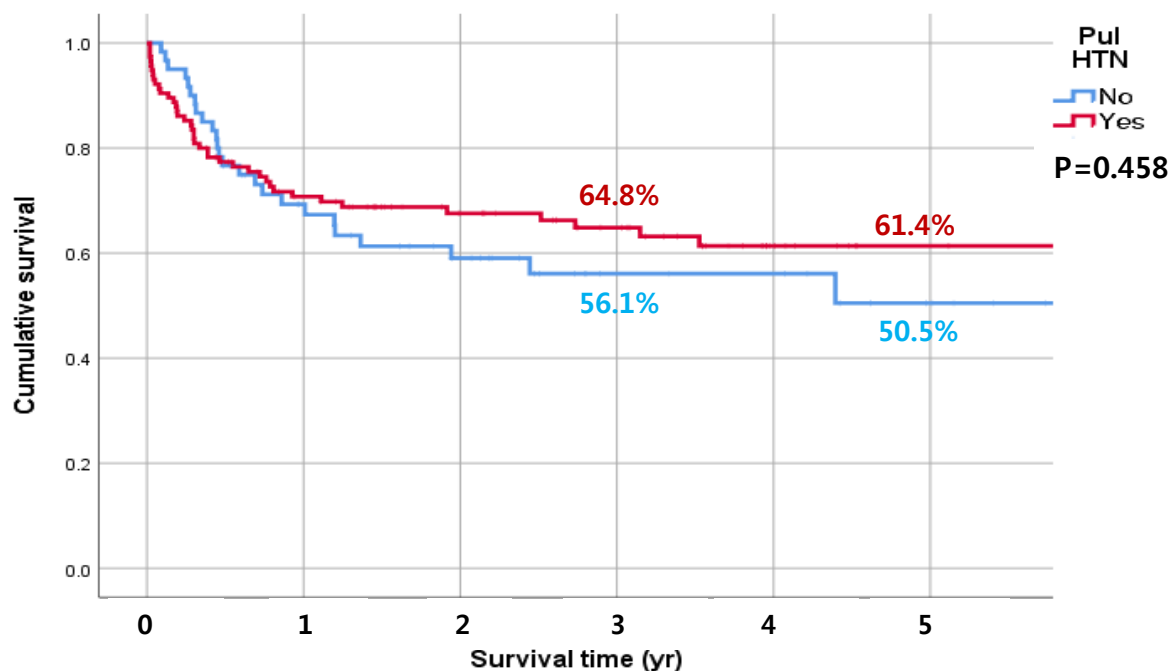


Table 1. Preoperative data

	Pul HTN – No (N=60)	Pul HTN - Yes (N=115)	P-value
Age (yr, median)	55 [5]	62 [20]	0.718
Sex (Male)	36 (60.0%)	75 (65.2%)	0.512
Preoperative diagnosis			<0.001
IPF	35 (35.0%)	65 (65.0%)	
CTD-ILD	8 (36.4%)	14 (63.6%)	
Bronchiectasis	1 (5.9%)	16 (94.1%)	
BOS after BMT	11 (91.7%)	1 (8.3%)	
LAM	3 (37.5%)	5 (62.5%)	
Pul arterial HTN	0	7 (100%)	
emphysema	1 (33.3%)	2 (66.7%)	
others	1 (16.7%)	5 (83.3%)	
Preoperative Mechanical support (Yes)	15 (25.0%)	23 (20.0%)	0.563
NYHA class IV	51 (85.0%)	81 (70.4%)	0.083
FEV1 (% , median)	41.0 [16] (N=56)	48.0 [16] (N=111)	0.083
FVC (% , median)	35.0 [9] (N=56)	49.0 [22] (N=111)	0.351
DLCO (% , median)	31.0 [14] (N=26)	29.0 [25] (N=64)	0.073
Mean PAPr (mmHg, median)	20.0 [4]	35.0 [16]	<0.001
PCWP (mmHg, median)	8.0 [5] (N=40)	14.0 [8] (N=76)	<0.001
Cardiac index	3.39 [0.60] (N=57)	2.90 [1.50] (N=112)	0.815
NT-pro BNP (median)	54.0 [42] (N=59)	636.0 [1961] (N=85)	0.008
Preak TR velocity (cm/s, median)	2.83 [0.89] (N=42)	3.88 [1.14] (N=90)	<0.001
PVR (wood unit, median)	2.90 [1.95] (N=31)	4.15 [1.74] (N=73)	0.005
EF (% , median)	61.0 [7] (N=59)	66.0 [12] (N=109)	0.464
Preop RVSP (mmHg)	45 [19]	58.5 [15]	<0.001
Preop TR			0.017
No~Trivial	37 (69.8%)	47 (54.7%)	
I	11 (20.8%)	18 (20.9%)	
II	2 (3.8%)	6 (7.0%)	
III	3 (5.7%)	8 (9.3%)	
IV	0	7 (8.1%)	

Table 2. Postoperative data

	Pul HTN – No (N=60)	Pul HTN - Yes (N=115)	P-value
Postop mean PAPr (mmHg)	24 [9]	21 [7.25]	0.482
Postop RVSP (mmHg)	32 [11]	30 [10]	0.200
Postop EF (%)	66 [18.5]	63.5 [11.0]	0.309
Postop TR			0.097
No~Trivial	46 (90.2%)	76 (97.4%)	
I	2 (3.9%)	1 (1.3%)	
II	3 (5.9%)	1 (1.3%)	
72hr PGD grade 3 (Yes)	12 (20.3%) (N=59)	22 (19.6%) (N=112)	1.00
Length of mechanical ventilator support (day, median)	5 [14]	4.5 [8]	0.514
Length of hospital stay (day, median)	38 (37)	33.5 [29]	0.199
ECMO weaning at OR (Yes)	32 (54.2%) (N=59)	56 (63.6%) (N=88)	0.304
Hospital mortality (Yes)	7 (11.7%)	24 (20.9%)	0.112

Figure 1. Overall Survival


Survival rate (Patients at risk)		1 year	2 year	3 year	4 year	5 year
Pul HTN	No (N=60)	69.3% (37)	59.0% (26)	56.1% (19)	56.1% (12)	50.5% (9)
	Yes (N=115)	70.7% (74)	67.6% (56)	64.8% (46)	61.4% (34)	61.4% (17)