

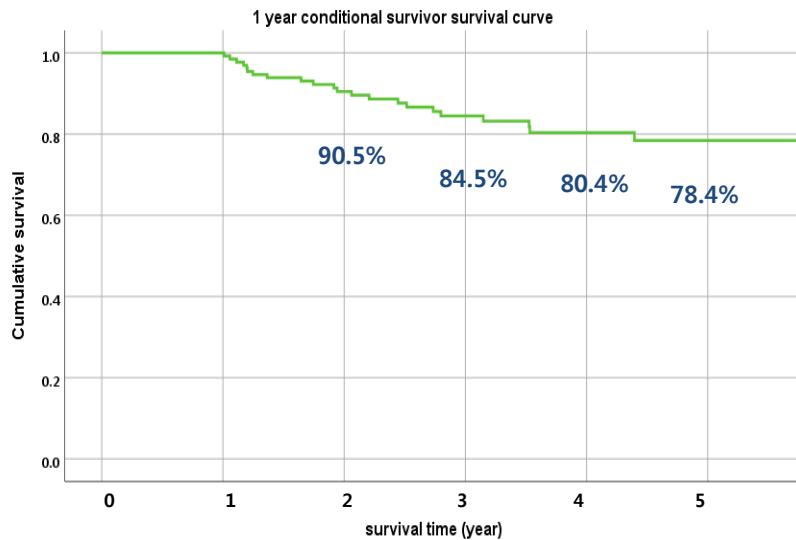
**Table 1. Preoperative data**

	CLAD < 2 (N=100)	CLAD ≥ 2 (N=19)	<i>P</i> -value
Age	53 [18.8]	44 [17.5]	0.101
Sex (M)	53 (53.0%)	12 (63.2%)	0.461
Preoperative diagnosis			0.880
IPF	56 (84.8%)	10 (15.2%)	
BOS after BMT	10 (90.9%)	1 (9.1%)	
Bronchiectasis	10 (71.4%)	4 (28.6%)	
LAM	6 (85.7%)	1 (14.3%)	
Others	17 (85.0%)	3 (15.0%)	
Preoperative ventilator support	23 (23.0%)	3 (15.8%)	0.762
Preoperative PRA (≥10%)	37 (37.0%)	7 (36.8%)	1.00
Donor P/F ratio	471 [122.2]	476.5 [114.4]	0.669
Total ischemic time (min)	297 [103]	294.5 [92]	0.590
ECMO weaning at OR	46 (54.1%) (N=85)	4 (30.8%) (N=13)	0.144
PGD G3 after 72hr	16 (16.0%)	4 (21.1%)	0.738
Length of postoperative ventilator support (day)	5 [9]	5 [11]	0.974
Length of Hospital stay (day)	32 [25]	34 [21]	0.986
CMV reactivation	35 (35%)	13 (68.4%)	0.010
Aspergillus infection	22 (22%)	8 (42.1%)	0.084
Fungus infection	24 (24%)	10 (52.6%)	0.024
Bacterial colonization	54 (54%)	14 (73.7%)	0.134
Pseudomonas	31 (31%)	10 (52.6%)	0.112
Acinetobacter	32 (32%)	7 (36.8%)	0.791
Klebsiella	28 (28%)	4 (21.1%)	0.778
Acute cellular rejection	11 (11%)	6 (31.6%)	0.030
Postoperative 1yr PRA ≥ 10%	34 (34%)	6 (31.6%)	1.00

**Table 2. Univariable and multivariable analysis for grade 2 or higher BOS**

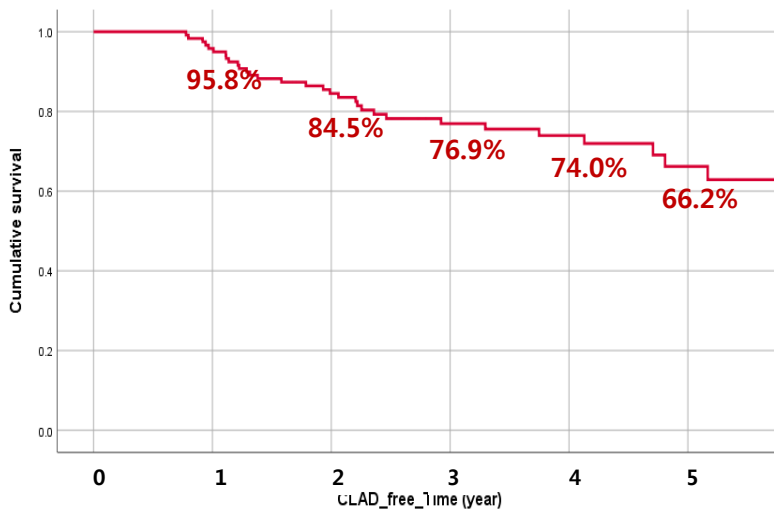
	Univariable			Multivariable		
	HR	95% CI	<i>P</i> -value	HR	95% CI	<i>P</i> -value
Preoperative PRA (≥10%)	0.977	0.353-2.703	0.965	-	-	-
PGD G3 after 72hr	1.383	0.406-4.713	0.604	-	-	-
Acute cellular rejection	3.734	1.180-11.822	0.025	8.687	2.039-37.011	0.003
Fungus infection	3.519	1.281-9.668	0.015	4.553	1.234-16.796	0.023
CMV reactivation	4.024	1.407-11.510	0.009	3.136	0.959-10.252	0.059
Aspergillus infection	2.579	0.924-7.196	0.070	-	-	-
PSA colonization	2.473	0.914-6.691	0.075	-	-	-

**Figure 1. Overall Survival in 1 year conditional survivor**



	1 year	2 year	3 year	4 year	5 year
<b>Survival rate</b>		90.5%	84.5%	80.4%	78.4%
<b>Patients at risk</b>	131	104	77	57	10

**Figure 2. CLAD free Survival in 1 year conditional survivor**



	1 year	2 year	3 year	4 year	5 year
<b>Survival rate</b>	95.8 %	84.5%	76.9%	74.0%	66.2%
<b>Patients at risk</b>	114	88	61	40	23